

## **HLA MediStarter Rider**

First Step To Your Essential  
Medical Cover



**For more information, please call 03-7650 1288**  
Log on to [www.hla.com.my](http://www.hla.com.my)



## **HLA MediStarter Rider** First Step To Your Essential Medical Cover

How often do you find yourself saying, “In a minute”, or “I’ll get to it later” when it comes to getting medical coverage?

While you may hesitate in getting the coverage you need since you’re currently physically healthy , but the question remains – how well are you prepared if there is an unexpected medical emergency?

Purchasing medical insurance is not a big commitment. HLA MediStarter Rider is one that is designed to offer you a comprehensive medical and hospitalisation coverage that would certainly suit your affordability.

**NOW** is the time for you to get essential medical coverage, especially when you’re still healthy.

# Benefits at a Glance

## Comprehensive Coverage At Its Best

1. From hospitalisation, surgery and outpatient to Traditional Chinese Medicine and Chiropractic treatments, this is the one plan for all your healthcare needs.
2. High annual limit of RM1 Million, and the best part is, there is no lifetime limit.

The full list of benefits covered is available on page 7, 8 and 9 in this brochure.

## Lifetime Coverage

You are assured of a lifelong medical coverage as this rider will be automatically renewed every year up to age 99 without any hassle, provided that the premium due are duly paid.

## Get Covered, Earn Rewards

### 1. Stay Healthy, Stay Rewarded

Now, you have more reasons to stay healthy! We'll give you cash reward amounting to 15% of the premium if you don't make any claim for the first 18 months and for every subsequent year.

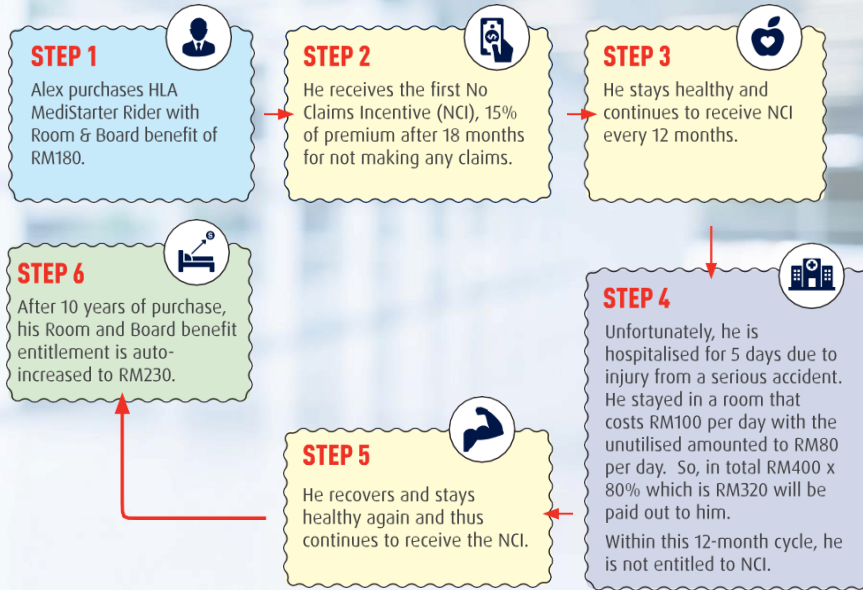
### 2. Stay Prudent, Stay Rewarded

We'll even give you extra cash in hand! If you choose a room with lower charges, 80% of the unutilised room and board benefit will be refunded to you.

### 3. Stay Loyal, Stay Rewarded

Be worry-free knowing that the longer you stay with the plan, the higher your Hospital Room and Board limit will be! We'll auto-increase your Room and Board limit from the current limit of RM180, by RM50 every 10 years, up to 3 times, to cushion the rising room and board cost driven by inflation.

# How The **REWARDS** Work



Earning rewards has never been easier. You will receive cash rewards for leading a healthy life and by not making any claims. Even if you do make claims, but you do not fully utilise your room benefits, we will offer you a cashback. Nonetheless, we will increase your room benefit entitlement if you continue to stay with the plan for a long period.

## MORE CHOICES

### We Provide, You Decide

We understand that being diagnosed with cancer can be a difficult time for anyone, and even more challenging if a decision has to be made to undergo cancer treatments.

We respect your decision and offer you the following options for these 5 cancer treatments.



Reimbursement for Chemotherapy, Radiotherapy, Targeted Therapy, Hormone Therapy or Immunotherapy

OR



Monthly cash of RM 3,000 for 12 months

## Premium Structure

The premium is based on your gender, attained age, occupation class and deductible option chosen. Depending on your health status, a loading on premium may be applicable.

With the 5-years age-banded premium pattern, it offers you stability in funding your premium as your finances grow stronger when you age. This means you only need to pay low rates to enjoy the greater benefit now.

Like any other medical insurances, the premium is not guaranteed, and depend on the claim experience of the entire business portfolio.

### For Greater Financial Freedom

No need to break the bank to own your medical coverage. At your choice, you could improve your financial freedom for **NOW** and **FUTURE**:

#### FOR NOW

Having a deductible amount

means lower premium and more cash in your hand

#### FOR FUTURE

Converting to a level premium policy

no more worries on premium increase when getting older

## Deductible Option to Help Further Curb the Burden

By opting for a plan with deductible, we shall reimburse the amount of eligible claim in excess of the deductible amount up to the annual limit.

2 options for deductible amount are available for this plan, you may enjoy up to 40% discount on your premium depending on your chosen deductible amount.

| Deductible Amount Per Rider Year (RM) | Premium Discount Compared to Plans without Deductible |
|---------------------------------------|-------------------------------------------------------|
| 2,500                                 | 25%                                                   |
| 5,000                                 | 40%                                                   |

For example, instead of opting for a plan without deductible, Alex has chosen a deductible amount of RM5,000. At age 50, the annual premium that he needs to pay is only RM1,703 instead of RM2,839 after the 40% discount.

### PRO TIPS

Sign up now to start earning cash rewards or set aside some savings to pay for future deductible.

If you are covered by your company's complimentary medical coverage, take advantage of it and start your plan with lower premium by applying this discount immediately.

On top of that, you have the flexibility to choose different deductible amount for pre- and post-retirement age of 60 that suits your budget and healthcare needs.

## Conversion Option to Turn into A Level Premium Policy

You have the privilege to restructure your commitment into a new policy with level premium structure whenever you are ready and there is no hassle in doing so. However, for the sake of clarification, the level premium of this new policy shall not be construed as guaranteed level premium and it may vary depending on the type of new policy that is converted to.

This conversion option is subject to prior approval and the prevailing terms and conditions as determined by the Company.

**Complete your medical coverage today with HLA MediStarter Rider!**

**"Don't gamble on the future, act now, without any delay."**

## Schedule of Benefits

| Hospital & Surgical                                                                                                                                                                                                                                                                                                                                                                                                                                                                                                                                                                                 | Amount (RM)                                                          |
|-----------------------------------------------------------------------------------------------------------------------------------------------------------------------------------------------------------------------------------------------------------------------------------------------------------------------------------------------------------------------------------------------------------------------------------------------------------------------------------------------------------------------------------------------------------------------------------------------------|----------------------------------------------------------------------|
| <p>Hospital Room &amp; Board<br/>(up to 150 days per Rider Year)</p> <p><i>I. Unutilized Hospital Room &amp; Board Benefit:<br/>Refund of 80% of unutilized Room &amp; Board benefit as daily cash allowance, up to 150 days per Rider Year</i></p> <p><i>II. Increasing Hospital Room &amp; Board Benefit:<br/>Auto-increase in Room &amp; Board benefit limit by RM50 for every 10 years, up to maximum 3 times per lifetime</i></p> <p><i>Any levy imposed on Room &amp; Board charges by the Government of Malaysia will be reimbursed in addition to this daily Room &amp; Board limit</i></p> | 180                                                                  |
| <p>Daily Cash as a result of Hospitalisation due to road accidents on a Malaysian Highway <sup>[1]</sup><br/>(up to 150 days per Rider Year)</p>                                                                                                                                                                                                                                                                                                                                                                                                                                                    | 180                                                                  |
| <p>Intensive Care Unit<br/>(up to 75 days per Rider Year)</p>                                                                                                                                                                                                                                                                                                                                                                                                                                                                                                                                       | As charged, subject to Reasonable & Customary Charges <sup>[2]</sup> |
| <p>Lodger Expenses<br/>(up to 150 days per Rider Year)</p>                                                                                                                                                                                                                                                                                                                                                                                                                                                                                                                                          |                                                                      |
| <p>Hospital Supplies &amp; Services</p>                                                                                                                                                                                                                                                                                                                                                                                                                                                                                                                                                             |                                                                      |
| <p>Surgical Fees<br/>(including pre-surgical assessment within 90 days prior to hospitalisation, Specialist's visits, medication and post-Surgery care within 90 days following discharge from Hospital)</p>                                                                                                                                                                                                                                                                                                                                                                                        |                                                                      |
| <p>Anaesthetist and Operating Theatre Fees</p>                                                                                                                                                                                                                                                                                                                                                                                                                                                                                                                                                      |                                                                      |
| <p>Organ Transplant</p>                                                                                                                                                                                                                                                                                                                                                                                                                                                                                                                                                                             |                                                                      |
| <p>Day Surgery<br/>(including pre-surgical assessment within 90 days prior to the date of Surgery, Specialist's visits, medication and post-Surgery care up to 90 days from the date of Surgery)</p>                                                                                                                                                                                                                                                                                                                                                                                                |                                                                      |
| <p>Ambulance Fees</p>                                                                                                                                                                                                                                                                                                                                                                                                                                                                                                                                                                               |                                                                      |

**Note:**

<sup>[1]</sup> A Malaysian Highway shall mean highway or expressway as listed by the Malaysian Highway Authority.

<sup>[2]</sup> Charges for medical care which is medically necessary shall be considered reasonable and customary to the extent that it does not exceed the general level of charges being made by others of similar standing in the locality where the charge is incurred, when furnishing like or comparable treatment, services or supplies to individual of the same sex and of comparable age for a similar sickness, disease or injury and in accordance with accepted medical standards and practice could not have been omitted without adversely affecting the Life Assured's medical condition.

## Schedule of Benefits

| Hospital & Surgical                                                                                                                                                                                                                                                                                                                                                                                                                                                                                                                                                                                                | Amount (RM)                                                            |
|--------------------------------------------------------------------------------------------------------------------------------------------------------------------------------------------------------------------------------------------------------------------------------------------------------------------------------------------------------------------------------------------------------------------------------------------------------------------------------------------------------------------------------------------------------------------------------------------------------------------|------------------------------------------------------------------------|
| In-Hospital Physician Visit<br>(up to 150 days per Rider Year)                                                                                                                                                                                                                                                                                                                                                                                                                                                                                                                                                     | As charged, subject to Reasonable and Customary Charges <sup>[2]</sup> |
| In-Hospital Physiotherapy Treatment Fees                                                                                                                                                                                                                                                                                                                                                                                                                                                                                                                                                                           |                                                                        |
| <b>Pre-Hospitalisation</b><br>(within 90 days prior to Hospitalisation)<br>- Pre-Hospital Medication<br>- Pre-Hospital Consultation<br>- Pre-Hospital Diagnostic Tests                                                                                                                                                                                                                                                                                                                                                                                                                                             |                                                                        |
| <b>Post-Hospitalisation</b><br>(within 90 days following discharge from Hospital)<br>- Post-Hospitalisation Treatment                                                                                                                                                                                                                                                                                                                                                                                                                                                                                              | Up to RM180 per visit, subject to RM10,000 per Rider Year              |
| - Traditional Chinese Medicine & Chiropractic Treatment                                                                                                                                                                                                                                                                                                                                                                                                                                                                                                                                                            |                                                                        |
| <b>Outpatient Treatment</b><br>- Emergency Accidental Outpatient Treatment<br>(within 30 days following such emergency treatment)<br>- Emergency Accidental Dental Treatment<br>- Outpatient Physiotherapy Treatment<br>(within 90 days from the date of Hospital discharge or Surgery)<br>- Outpatient Cancer Treatment<br>(inclusive of doctor's consultation and related examination, laboratory or diagnostic tests or any drugs prescribed)<br>- Outpatient Kidney Dialysis Treatment<br>(inclusive of doctor's consultation and related examination, laboratory or diagnostic tests or any drugs prescribed) | As charged, subject to Reasonable and Customary Charges <sup>[2]</sup> |
| - Outpatient Dengue Fever Treatment and Zika Virus Treatment (per Rider Year)<br>(inclusive of doctor's consultation, diagnostic tests, treating medication/ fluids and monitoring)                                                                                                                                                                                                                                                                                                                                                                                                                                | 2,000                                                                  |
| Alternative Cancer Treatment Benefit<br>(in lieu of radiotherapy, chemotherapy, targeted therapy, hormone therapy and immunotherapy during the benefit payment period)<br>(Payable for 12 months, maximum claim up to 2 times per lifetime)                                                                                                                                                                                                                                                                                                                                                                        | 3,000 per month                                                        |

### Note:

<sup>[1]</sup> A Malaysian Highway shall mean highway or expressway as listed by the Malaysian Highway Authority.

<sup>[2]</sup> Charges for medical care which is medically necessary shall be considered reasonable and customary to the extent that it does not exceed the general level of charges being made by others of similar standing in the locality where the charge is incurred, when furnishing like or comparable treatment, services or supplies to individual of the same sex and of comparable age for a similar sickness, disease or injury and in accordance with accepted medical standards and practice could not have been omitted without adversely affecting the Life Assured's medical condition.

## Schedule of Benefits

| Hospital & Surgical                                      | Amount (RM)                                                  |
|----------------------------------------------------------|--------------------------------------------------------------|
| Intraocular Lens<br>(inclusive of multifocal lens)       | Up to RM 3,000 per Surgery per eye and RM 6,000 per lifetime |
| Home Nursing Care<br>(up to 180 days per lifetime)       | 60                                                           |
| Annual Limit<br>(items above are subject to this limit)  | 1,000,000                                                    |
|                                                          | No Lifetime Limit                                            |
| Emergency Evacuation & Repatriation<br>(Limit per event) | 1,000,000                                                    |

**Note:**

<sup>[1]</sup> A Malaysian Highway shall mean highway or expressway as listed by the Malaysian Highway Authority.

<sup>[2]</sup> Charges for medical care which is medically necessary shall be considered reasonable and customary to the extent that it does not exceed the general level of charges being made by others of similar standing in the locality where the charge is incurred, when furnishing like or comparable treatment, services or supplies to individual of the same sex and of comparable age for a similar sickness, disease or injury and in accordance with accepted medical standards and practice could not have been omitted without adversely affecting the Life Assured's medical condition.

## What do you need to know?

|                             |                                                                                                                                                                                                                                                                                                                                                                         |                |
|-----------------------------|-------------------------------------------------------------------------------------------------------------------------------------------------------------------------------------------------------------------------------------------------------------------------------------------------------------------------------------------------------------------------|----------------|
| <b>Entry Age</b>            | <b>Minimum</b>                                                                                                                                                                                                                                                                                                                                                          | <b>Maximum</b> |
|                             | 30 days old                                                                                                                                                                                                                                                                                                                                                             | 70 years old   |
| <b>Rider Term</b>           | HLA MediStarter Rider is a yearly renewable rider that will automatically renew at the end of each rider year. The last renewal age is age 99.                                                                                                                                                                                                                          |                |
| <b>Premium Payment Term</b> | Payable for entire rider term                                                                                                                                                                                                                                                                                                                                           |                |
| <b>Premium</b>              | <p>(a) Premium payable based on your gender, attained age, occupation class and deductible option chosen. Depending on your health status, a loading on premium may be applicable.</p> <p>(b) The premium rates are not guaranteed and may be revised from time to time with 90 days' prior written notice. Such revision will be effected on the next anniversary.</p> |                |
| <b>Terms and Conditions</b> | <p>(a) All applications are subject to underwriting approval.</p> <p>(b) Please refer to the Product Disclosure Sheet for details on the waiting period, exclusions, and other term and conditions.</p>                                                                                                                                                                 |                |
| <b>Tax Relief</b>           | This rider may qualify you for the personal tax relief under education and medical insurance up to RM3,000, subject to the final decision of the Inland Revenue Board.                                                                                                                                                                                                  |                |

## Annual Premium for HLA MediStarter Rider

| Age     | Pre-retirement deductible 0; Post-retirement deductible 0 |             |
|---------|-----------------------------------------------------------|-------------|
|         | Male (RM)                                                 | Female (RM) |
| 0 - 4   | 1,579                                                     | 1,362       |
| 5 - 9   | 1,024                                                     | 1,043       |
| 10 - 14 | 897                                                       | 964         |
| 15 - 19 | 900                                                       | 966         |
| 20 - 24 | 915                                                       | 977         |
| 25 - 29 | 917                                                       | 980         |
| 30 - 34 | 999                                                       | 1,049       |
| 35 - 39 | 1,179                                                     | 1,171       |
| 40 - 44 | 1,611                                                     | 1,383       |
| 45 - 49 | 2,111                                                     | 1,732       |
| 50 - 54 | 2,839                                                     | 2,317       |
| 55 - 59 | 4,011                                                     | 2,976       |
| 60 - 64 | 5,636                                                     | 3,648       |
| 65 - 69 | 7,546                                                     | 4,801       |
| 70 - 74 | 9,886                                                     | 6,298       |
| 75 - 79 | 13,195                                                    | 8,664       |
| 80 - 84 | 16,229                                                    | 11,606      |
| 85 - 89 | 19,596                                                    | 15,034      |
| 90 - 94 | 22,885                                                    | 19,234      |
| 95 - 99 | 26,578                                                    | 23,641      |

**Note:**

- The table shows the premiums for a standard life with Occupation class 1 and 2. For presentation purposes, the premiums are rounded up to the next ringgit.
- The premium rates shown in the table above are not guaranteed and are subject to review and may vary depending on the claim experience of the entire business portfolio.

### **Important Notes**

1. This brochure is intended to assist you to understand the basic and important features of a Medical and Health Insurance (MHI) product so that you are able to make an informed decision before purchasing the product. Please refer to the sample policy contract for details of the important health insurance features of the plan that you intend to purchase.
2. You should ensure that important information regarding the plan is disclosed to you and that you understood the information disclosed. Where there is ambiguity, please seek an explanation/clarification from the company or its intermediary. To find out more about the basics of health insurance, please refer to the consumer education booklet on medical and health insurance available at most branches of insurance and takaful companies. You may also log on to [www.insuranceinfo.com.my](http://www.insuranceinfo.com.my) for more information.
3. Prior to making a decision to purchase any Medical and Health Insurance (MHI) policy, you should be satisfied that this plan will best serve your needs and resources and the amount payable under the policy is an amount you can afford.

### **IMPORTANT:**

Hong Leong Assurance Berhad is licensed under the Financial Services Act 2013 and regulated by Bank Negara Malaysia.

For further information, call your friendly HLA agent today:

## **HLA MediShield III Rider**

Every Choice is A Reward



For more information, please call 03-7650 1288  
Log on to [www.hla.com.my](http://www.hla.com.my)



# HLA MediShield III Rider

## Every Choice is A Reward

Health is the greatest wealth and it is essential in the pursuit of passion and happiness in life. To enjoy life with peace of mind, you need the best health coverage possible. HLA MediShield III Rider is a comprehensive medical plan that goes beyond than just ensuring your hospitalisation and surgical costs are taken care of.

This unique plan also offers you cash reward for staying healthy and economical. Our aim is to provide you the best medical coverage and support at every choice made.

With HLA MediShield III Rider, every choice is indeed a reward!

# IT'S ALL ABOUT REWARDS!



## Stay Healthy, Stay Rewarded

No Claims Incentive (NCI) rewards you with **15%** of the insurance charge as cash reward for HLA MediShield III Rider (not including optional benefits). Now, you have more reasons to stay healthy!

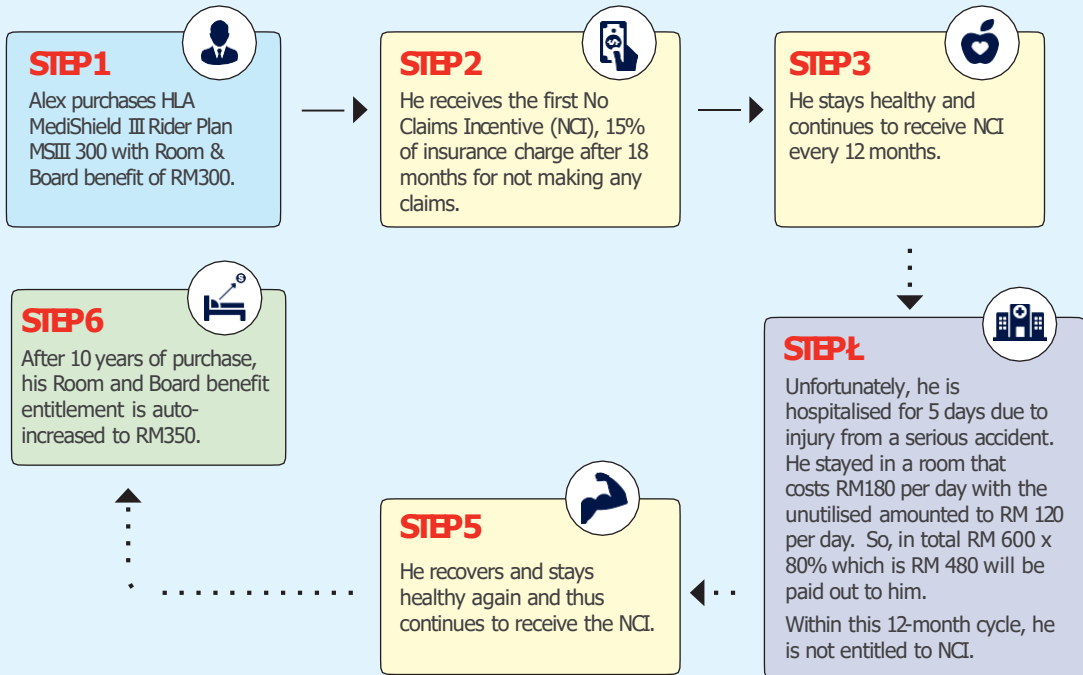
## Stay Loyal, Stay Rewarded

Stay worry-free knowing that your Room and Board benefit limit auto-increases by **RM50 every 10 years** to cushion the rising Room and Board cost driven by inflation. The longer you stay with the plan, the higher your Hospital Room and Board limit will be!

## Stay Economical, Stay Rewarded

If you choose a room with lower charges, **80%** of the unutilised Room and Board benefit will be refunded to you. That's extra cash in hand for you!

# HOW THE REWARDS WORK



## MORE CHOICES

### We Provide, You Decide

We understand that being diagnosed with cancer can be a difficult time for anyone, and even more challenging if a decision has to be made to undergo cancer treatments.

We respect your decision and offer you options for these 5 cancer treatments.



Reimbursement for Chemotherapy, Radiotherapy, Targeted Therapy, Hormone Therapy or Immunotherapy

OR



Monthly cash up to RM 5,000 for 12 months

Before you making any decision, you should consult your health care providers for advice.

# CUSTOMIZE

## YOUR MEDISHIELD III SMARTLY

### STEP 1

Choose from 3 plans:

- MSIII 200
- MSIII 300
- MSIII 500

Refer to next page for details of plans.



### STEP 2

Do you have any medical coverage (from employer or existing medical plan)?

- If No, go to Step 3.
- If Yes, pick a deductible option for insurance charge savings.



### STEP 3

Boost your annual limit at a very affordable cost

**+1.5mil**  
annual limit



### STEP 4

Receive one-time

**RM20,000**

lump sum cash relief



### STEP 5

Enhance coverage with overseas medical treatment

Gain access to medical treatment in

- Singapore
- Hong Kong
- China

for selected surgeries.



## Schedule of Benefits

| Designated Plan                                                                                                                                                                                      | MSIII 200                                                              | MSIII 300 | MSIII 500 |
|------------------------------------------------------------------------------------------------------------------------------------------------------------------------------------------------------|------------------------------------------------------------------------|-----------|-----------|
| <b>Hospital &amp; Surgical</b>                                                                                                                                                                       | <b>Amount (RM)</b>                                                     |           |           |
| Hospital Room & Board<br>(up to 150 days per Rider Year)                                                                                                                                             |                                                                        |           |           |
| (a) Unutilized Hospital Room & Board Benefit: Refund of 80% of unutilized Room & Board benefit as daily cash allowance, up to 150 days per Rider Year.                                               |                                                                        |           |           |
| (b) Increasing Hospital Room & Board Benefit: Auto-increase in Room & Board benefit limit by RM 50 for every 10 years, up to maximum 3 times per lifetime.                                           | 200                                                                    | 300       | 500       |
| <i>Any levy imposed on Room &amp; Board charges by the Government of Malaysia will be reimbursed in addition to this daily Room &amp; Board limit.</i>                                               |                                                                        |           |           |
| Daily Cash as a result of Hospitalisation due to road accidents on a Malaysian Highway <sup>[1]</sup><br>(up to 150 days per Rider Year)                                                             | 200                                                                    | 300       | 500       |
| Intensive Care Unit<br>(up to 75 days per Rider Year)                                                                                                                                                | As charged, subject to Reasonable and Customary Charges <sup>[2]</sup> |           |           |
| Lodger Expenses<br>(up to 150 days per Rider Year)                                                                                                                                                   |                                                                        |           |           |
| Hospital Supplies & Services                                                                                                                                                                         |                                                                        |           |           |
| Surgical Fees<br>(including pre-surgical assessment within 90 days prior to hospitalisation, Specialist's visits, medication and post-Surgery care within 90 days following discharge from Hospital) |                                                                        |           |           |

<sup>1</sup> A Malaysian Highway shall mean highway or expressway as listed by the Malaysian Highway Authority.

<sup>2</sup> Charges for medical care which is Medically Necessary shall be considered reasonable and customary to the extent that it does not exceed the general level of charges being made by others of similar standing in the locality where the charge is incurred, when furnishing like or comparable treatment, services or supplies to individual of the same sex and of comparable age for a similar Sickness, Disease or Injury and in accordance with accepted medical standards and practice could not have been omitted without adversely affecting the Life Assured's medical condition.

## Schedule of Benefits

| Designated Plan                                                                                                                                                                              | MSIII 200                                                              | MSIII 300 | MSIII 500 |                                                       |                                                       |                                                       |
|----------------------------------------------------------------------------------------------------------------------------------------------------------------------------------------------|------------------------------------------------------------------------|-----------|-----------|-------------------------------------------------------|-------------------------------------------------------|-------------------------------------------------------|
| <b>Hospital &amp; Surgical</b>                                                                                                                                                               | <b>Amount (RM)</b>                                                     |           |           |                                                       |                                                       |                                                       |
| Anaesthetist and Operating Theatre Fees                                                                                                                                                      | As charged, subject to Reasonable and Customary Charges <sup>[2]</sup> |           |           |                                                       |                                                       |                                                       |
| Organ Transplant                                                                                                                                                                             |                                                                        |           |           |                                                       |                                                       |                                                       |
| Day Surgery<br>(including pre-surgical assessment within 90 days prior to the date of Surgery, Specialist's visits, medication and post-Surgery care up to 90 days from the date of Surgery) |                                                                        |           |           |                                                       |                                                       |                                                       |
| Ambulance Fees                                                                                                                                                                               |                                                                        |           |           |                                                       |                                                       |                                                       |
| In-Hospital Physician Visit<br>(up to 150 days per Rider Year)                                                                                                                               |                                                                        |           |           |                                                       |                                                       |                                                       |
| In-Hospital Physiotherapy Treatment Fees                                                                                                                                                     |                                                                        |           |           |                                                       |                                                       |                                                       |
| <b>Pre-Hospitalisation</b><br>(within 90 days prior to Hospitalisation)<br>- Pre-Hospital Medication<br>- Pre-Hospital Consultation<br>- Pre-Hospital Diagnostic Tests                       |                                                                        |           |           |                                                       |                                                       |                                                       |
| <b>Post-Hospitalisation</b><br>(within 90 days following discharge from Hospital)<br>- Post-Hospitalisation Treatment                                                                        |                                                                        |           |           |                                                       |                                                       |                                                       |
| - Traditional Chinese Medicine & Chiropractic Treatment                                                                                                                                      |                                                                        |           |           | Up to 200 per visit, subject to 12,000 per Rider Year | Up to 300 per visit, subject to 18,000 per Rider Year | Up to 500 per visit, subject to 30,000 per Rider Year |

<sup>2</sup> Charges for medical care which is Medically Necessary shall be considered reasonable and customary to the extent that it does not exceed the general level of charges being made by others of similar standing in the locality where the charge is incurred, when furnishing like or comparable treatment, services or supplies to individual of the same sex and of comparable age for a similar Sickness, Disease or Injury and in accordance with accepted medical standards and practice could not have been omitted without adversely affecting the Life Assured's medical condition.

## Schedule of Benefits

| Designated Plan                                                                                                                                                                                                                                                                                                                                                                                                                                                                                                                                                                                                                                                               | MSIII 200                                                              | MSIII 300       | MSIII 500       |
|-------------------------------------------------------------------------------------------------------------------------------------------------------------------------------------------------------------------------------------------------------------------------------------------------------------------------------------------------------------------------------------------------------------------------------------------------------------------------------------------------------------------------------------------------------------------------------------------------------------------------------------------------------------------------------|------------------------------------------------------------------------|-----------------|-----------------|
| <b>Hospital &amp; Surgical</b>                                                                                                                                                                                                                                                                                                                                                                                                                                                                                                                                                                                                                                                | <b>Amount (RM)</b>                                                     |                 |                 |
| <b>Outpatient Treatment</b> <ul style="list-style-type: none"> <li>- Emergency Accidental Outpatient Treatment (within 30 days following such emergency treatment)</li> <li>- Emergency Accidental Dental Treatment</li> <li>- Outpatient Physiotherapy Treatment (within 90 days from the date of Hospital discharge or Surgery)</li> <li>- Outpatient Cancer Treatment (inclusive of doctor's consultation and related examination, laboratory or diagnostic tests or any drugs prescribed)</li> <li>- Outpatient Kidney Dialysis Treatment (inclusive of doctor's consultation and related examination, laboratory or diagnostic tests or any drugs prescribed)</li> </ul> | As charged, subject to Reasonable and Customary Charges <sup>[2]</sup> |                 |                 |
| - Outpatient Dengue Fever Treatment and Zika Virus Treatment (per Rider Year) (inclusive of doctor's consultation, diagnostic tests, treating medication/ fluids and monitoring)                                                                                                                                                                                                                                                                                                                                                                                                                                                                                              | 2,000                                                                  | 3,000           | 5,000           |
| Alternative Cancer Treatment Benefit (in lieu of radiotherapy, chemotherapy, targeted therapy, hormone therapy and immunotherapy during the benefit payment period) (Payable for 12 months, maximum claim up to 2 times per lifetime)                                                                                                                                                                                                                                                                                                                                                                                                                                         | 3,000 per month                                                        | 4,000 per month | 5,000 per month |
| Intraocular Lens (inclusive of multifocal lens)                                                                                                                                                                                                                                                                                                                                                                                                                                                                                                                                                                                                                               | Up to RM3,000 per Surgery per eye and RM6,000 per lifetime             |                 |                 |
| Home Nursing Care (up to 180 days per lifetime)                                                                                                                                                                                                                                                                                                                                                                                                                                                                                                                                                                                                                               | 60                                                                     | 80              | 120             |
| Annual Limit (items above are subject to this limit)                                                                                                                                                                                                                                                                                                                                                                                                                                                                                                                                                                                                                          | 1,000,000                                                              | 1,500,000       | 2,000,000       |
|                                                                                                                                                                                                                                                                                                                                                                                                                                                                                                                                                                                                                                                                               | No Lifetime Limit                                                      |                 |                 |
| Emergency Evacuation & Repatriation (Limit per event)                                                                                                                                                                                                                                                                                                                                                                                                                                                                                                                                                                                                                         | 1,000,000                                                              | 1,000,000       | 1,000,000       |

<sup>2</sup> Charges for medical care which is Medically Necessary shall be considered reasonable and customary to the extent that it does not exceed the general level of charges being made by others of similar standing in the locality where the charge is incurred, when furnishing like or comparable treatment, services or supplies to individual of the same sex and of comparable age for a similar Sickness, Disease or Injury and in accordance with accepted medical standards and practice could not have been omitted without adversely affecting the Life Assured's medical condition.

## How to customise your medical plan smartly to suit your affordability and needs?

### STEP 1: Choose the medical plan that's right for you

Choose from MSIII 200, MSIII 300, or MSIII 500 depending on your Room & Board and annual limit needs.

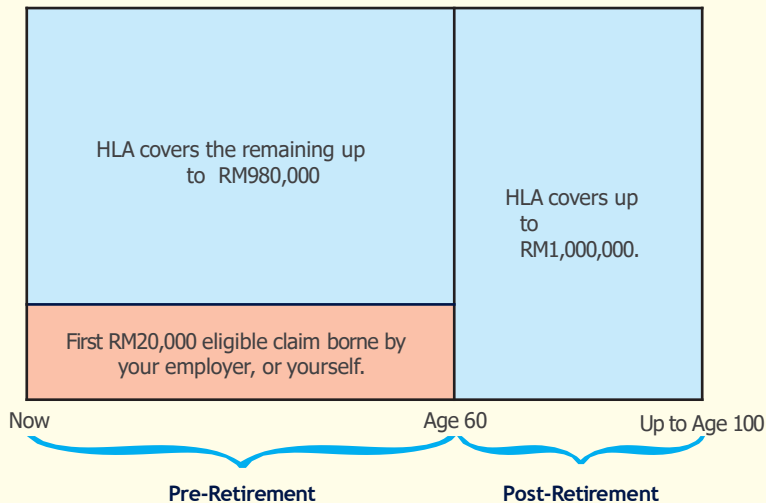
### STEP 2: Pick your preferred deductible amount

You may enjoy up to 80% savings on your insurance charges depending on your chosen deductible amount.

| Deductible Amount Per Rider Year (RM) | Insurance Charges Savings Compared To Plans Without Deductible |
|---------------------------------------|----------------------------------------------------------------|
| 2,500                                 | 25%                                                            |
| 5,000                                 | 40%                                                            |
| 20,000                                | 70%                                                            |
| 75,000                                | 80%                                                            |

A deductible is the amount of eligible claim per any one rider year to be borne by your employer, or from your existing medical coverage, or even from your own pocket. HLA will pay the balance up to the annual limit. You may choose different levels of deductibles pre and post retirement age of 60.

Illustration of total eligible claims for Pre-retirement deductible of RM20,000 and Post-retirement deductible of RM0



## Optional Benefits

With additional affordable insurance charge, you may enhance your medical coverage with following optional benefits.

### STEP 3: Enhance your annual limit with an extra RM1.5 million

You can now enhance the annual limit for your medical coverage with the purchase of the Million Extra III optional benefit.

| HLA MediShield III Rider Annual Limit (RM) |             | Adding Million Extra III Annual Limit (RM) | Total Annual Limit (RM) |
|--------------------------------------------|-------------|--------------------------------------------|-------------------------|
| MSIII 200                                  | 1.0 million | 1.5 million                                | 2.5 million             |
| MSIII 300                                  | 1.5 million |                                            | 3.0 million             |
| MSIII 500                                  | 2.0 million |                                            | 3.5 million             |

### STEP 4: Receive cash for yourself in times of needs with MediCash Relief

You can now enhance your medical plan to receive one-time lump sum cash relief of RM 20,000 for your own use with MediCash Relief upon occurrence of any of the following Major Medical Conditions: -

#### Coverage up to age 85:

1. ICU admission of at least 5 consecutive days
2. Failure to perform 3 out of 6 ADL or unable to work in any occupation
3. Open surgery for major organs (heart, lung, brain, liver, kidney)
4. Major organ failure (heart, lung, brain, liver, kidney)
5. Surgery requiring general anesthesia leading to at least 15 days consecutive hospitalization

#### Coverage up to age 100:

6. Cancer
7. Heart Attack
8. Stroke
9. Deafness
10. Loss of Speech

The benefit will only be paid once and upon fulfilment of any one of the Major Medical Conditions.

### STEP 5: Extend your coverage further with overseas treatment

You may enhance your medical coverage by extending your medical treatment to pre-authorized hospitals in Singapore, Hong Kong, and China with Overseas Treatment for Selected Surgeries II for these surgeries:

- (a) Surgery related to Cancer
- (b) Neurosurgery
- (c) Coronary Artery Bypass Surgery
- (d) Heart Valve Surgery
- (e) Organ Transplant (kidney, lung, liver, heart, pancreas and bone marrow)

The overall benefit pay-out is restricted to RM250,000 per Any One Disability and RM 250,000 per Rider Year capped at RM2.5 million in aggregate.

For Any One Disability of the Selected Surgeries that you choose to receive treatment in Malaysia, this optional benefit will offer you a cash allowance of RM8,000.

Once you obtain pre-authorisation from HLA, we shall cover all the benefits as shown in the Schedule of Benefits except for the following:

- |                                                                                        |                                                                |
|----------------------------------------------------------------------------------------|----------------------------------------------------------------|
| (a) Daily Cash amount for hospitalisation due to road accidents on a Malaysian Highway | (f) Emergency Accidental Dental Treatment                      |
| (b) Pre-Hospital Medication                                                            | (g) Outpatient Dengue Fever Treatment and Zika Virus Treatment |
| (c) Pre-Hospital Non-Specialist Consultation                                           | (h) Alternative Cancer Treatment Benefit                       |
| (d) Traditional Chinese Medicine & Chiropractic Treatment                              | (i) Intraocular Lens                                           |
| (e) Emergency Accidental Outpatient Treatment                                          | (j) Emergency Evacuation & Repatriation                        |

## What do you need to know?

|                      | HLA MediShield III Rider                                                                                                                                                                                                                                                                                                                                                                | Million Extra III     | Overseas Treatment for Selected Surgeries II | MediCash Relief                                                                                                                      |                |
|----------------------|-----------------------------------------------------------------------------------------------------------------------------------------------------------------------------------------------------------------------------------------------------------------------------------------------------------------------------------------------------------------------------------------|-----------------------|----------------------------------------------|--------------------------------------------------------------------------------------------------------------------------------------|----------------|
| Entry Age            | <b>Life Assured</b>                                                                                                                                                                                                                                                                                                                                                                     | <b>Minimum</b>        | <b>Maximum</b>                               | <b>Minimum</b>                                                                                                                       | <b>Maximum</b> |
|                      | Unborn child                                                                                                                                                                                                                                                                                                                                                                            | 13 weeks of gestation | Before birth                                 | 30 days old                                                                                                                          | 70 years old   |
|                      | Others                                                                                                                                                                                                                                                                                                                                                                                  | 30 days old           | 70 years old                                 |                                                                                                                                      |                |
| Rider Term           | Up to age 100                                                                                                                                                                                                                                                                                                                                                                           |                       |                                              |                                                                                                                                      |                |
| Terms and Conditions | (a) The rates of insurance charges are not guaranteed and may be revised from time to time with 90 days' prior written notice. Such revision will be effected on the next anniversary.<br>(b) All applications are subject to underwriting approval.<br>(c) Please refer to the Product Disclosure Sheet for details on the waiting period, exclusions, and other terms and conditions. |                       |                                              |                                                                                                                                      |                |
| Tax Relief           | These Riders may qualify you for the personal tax relief under education and medical insurance up to RM3,000, subject to the final decision of the Inland Revenue Board.                                                                                                                                                                                                                |                       |                                              |                                                                                                                                      |                |
| Insurance Charges    | Insurance charge is deducted on monthly basis for the entire Rider term based on plan type & deductible option, attained age, sex, health status and occupation class of the Life Assured.                                                                                                                                                                                              |                       |                                              | Insurance charge is deducted on monthly basis for the entire Rider term based on attained age, health status, smoker status and sex. |                |

# Annual Insurance Charges for HLA MediShield III Rider

## Occupational Class 1 & 2

| Age | Pre-retirement Deductible 0; Post-retirement Deductible 0 |           |           |           |           |           |
|-----|-----------------------------------------------------------|-----------|-----------|-----------|-----------|-----------|
|     | Male                                                      |           |           | Female    |           |           |
|     | MSIII 200                                                 | MSIII 300 | MSIII 500 | MSIII 200 | MSIII 300 | MSIII 500 |
| 0   | 1,661                                                     | 2,222     | 3,260     | 1,324     | 1,736     | 2,538     |
| 1   | 1,484                                                     | 1,988     | 2,916     | 1,227     | 1,623     | 2,372     |
| 2   | 1,302                                                     | 1,748     | 2,563     | 1,138     | 1,520     | 2,222     |
| 3   | 1,179                                                     | 1,588     | 2,328     | 1,080     | 1,460     | 2,134     |
| 4   | 1,086                                                     | 1,467     | 2,150     | 1,021     | 1,398     | 2,042     |
| 5   | 994                                                       | 1,348     | 1,974     | 969       | 1,343     | 1,962     |
| 6   | 920                                                       | 1,253     | 1,834     | 921       | 1,290     | 1,885     |
| 7   | 864                                                       | 1,178     | 1,724     | 877       | 1,236     | 1,805     |
| 8   | 811                                                       | 1,105     | 1,617     | 847       | 1,193     | 1,742     |
| 9   | 762                                                       | 1,039     | 1,519     | 819       | 1,153     | 1,684     |
| 10  | 762                                                       | 1,039     | 1,519     | 819       | 1,153     | 1,684     |
| 11  | 762                                                       | 1,039     | 1,519     | 819       | 1,153     | 1,684     |
| 12  | 762                                                       | 1,039     | 1,519     | 819       | 1,153     | 1,684     |
| 13  | 762                                                       | 1,039     | 1,519     | 819       | 1,153     | 1,684     |

Note:

For presentation purposes, the insurance charges are rounded up to the next ringgit.

# Annual Insurance Charges for HLA MediShield III Rider

## Occupational Class 1 & 2

| Age | Pre-retirement Deductible 0; Post-retirement Deductible 0 |           |           |           |           |           |
|-----|-----------------------------------------------------------|-----------|-----------|-----------|-----------|-----------|
|     | Male                                                      |           |           | Female    |           |           |
|     | MSIII 200                                                 | MSIII 300 | MSIII 500 | MSIII 200 | MSIII 300 | MSIII 500 |
| 14  | 762                                                       | 1,039     | 1,519     | 819       | 1,153     | 1,684     |
| 15  | 762                                                       | 1,040     | 1,519     | 819       | 1,153     | 1,684     |
| 16  | 762                                                       | 1,040     | 1,519     | 819       | 1,153     | 1,684     |
| 17  | 762                                                       | 1,040     | 1,519     | 819       | 1,153     | 1,684     |
| 18  | 762                                                       | 1,040     | 1,519     | 819       | 1,153     | 1,684     |
| 19  | 778                                                       | 1,060     | 1,550     | 831       | 1,170     | 1,709     |
| 20  | 778                                                       | 1,060     | 1,550     | 831       | 1,170     | 1,709     |
| 21  | 778                                                       | 1,060     | 1,550     | 831       | 1,170     | 1,709     |
| 22  | 778                                                       | 1,060     | 1,550     | 831       | 1,170     | 1,709     |
| 23  | 778                                                       | 1,060     | 1,550     | 831       | 1,170     | 1,709     |
| 24  | 778                                                       | 1,060     | 1,550     | 831       | 1,170     | 1,709     |
| 25  | 778                                                       | 1,060     | 1,550     | 831       | 1,170     | 1,709     |
| 26  | 778                                                       | 1,060     | 1,550     | 831       | 1,170     | 1,709     |
| 27  | 778                                                       | 1,060     | 1,550     | 831       | 1,170     | 1,709     |

**Note:**

For presentation purposes, the insurance charges are rounded up to the next ringgit.

# Annual Insurance Charges for HLA MediShield III Rider

## Occupational Class 1 & 2

| Age | Pre-retirement Deductible 0; Post-retirement Deductible 0 |           |           |           |           |           |
|-----|-----------------------------------------------------------|-----------|-----------|-----------|-----------|-----------|
|     | Male                                                      |           |           | Female    |           |           |
|     | MSIII 200                                                 | MSIII 300 | MSIII 500 | MSIII 200 | MSIII 300 | MSIII 500 |
| 28  | 778                                                       | 1,060     | 1,550     | 831       | 1,170     | 1,709     |
| 29  | 789                                                       | 1,066     | 1,558     | 843       | 1,175     | 1,718     |
| 30  | 808                                                       | 1,073     | 1,564     | 856       | 1,182     | 1,726     |
| 31  | 827                                                       | 1,099     | 1,602     | 870       | 1,189     | 1,735     |
| 32  | 848                                                       | 1,129     | 1,646     | 891       | 1,194     | 1,738     |
| 33  | 870                                                       | 1,163     | 1,696     | 911       | 1,220     | 1,774     |
| 34  | 894                                                       | 1,199     | 1,750     | 931       | 1,249     | 1,817     |
| 35  | 923                                                       | 1,244     | 1,815     | 951       | 1,279     | 1,861     |
| 36  | 953                                                       | 1,288     | 1,881     | 971       | 1,308     | 1,904     |
| 37  | 994                                                       | 1,344     | 1,963     | 993       | 1,336     | 1,945     |
| 38  | 1,037                                                     | 1,402     | 2,048     | 1,019     | 1,364     | 1,987     |
| 39  | 1,106                                                     | 1,493     | 2,181     | 1,045     | 1,392     | 2,027     |
| 40  | 1,196                                                     | 1,613     | 2,357     | 1,073     | 1,423     | 2,073     |
| 41  | 1,287                                                     | 1,733     | 2,534     | 1,116     | 1,476     | 2,152     |

Note:

For presentation purposes, the insurance charges are rounded up to the next ringgit.

# Annual Insurance Charges for HLA MediShield III Rider

## Occupational Class 1 & 2

| Age | Pre-retirement Deductible 0; Post-retirement Deductible 0 |           |           |           |           |           |
|-----|-----------------------------------------------------------|-----------|-----------|-----------|-----------|-----------|
|     | Male                                                      |           |           | Female    |           |           |
|     | MSIII 200                                                 | MSIII 300 | MSIII 500 | MSIII 200 | MSIII 300 | MSIII 500 |
| 42  | 1,374                                                     | 1,851     | 2,708     | 1,177     | 1,560     | 2,275     |
| 43  | 1,456                                                     | 1,965     | 2,874     | 1,231     | 1,642     | 2,395     |
| 44  | 1,535                                                     | 2,075     | 3,036     | 1,281     | 1,724     | 2,516     |
| 45  | 1,614                                                     | 2,184     | 3,197     | 1,333     | 1,810     | 2,641     |
| 46  | 1,696                                                     | 2,296     | 3,361     | 1,390     | 1,900     | 2,774     |
| 47  | 1,785                                                     | 2,412     | 3,533     | 1,459     | 1,999     | 2,918     |
| 48  | 1,884                                                     | 2,537     | 3,716     | 1,542     | 2,108     | 3,078     |
| 49  | 1,993                                                     | 2,675     | 3,918     | 1,638     | 2,227     | 3,252     |
| 50  | 2,114                                                     | 2,829     | 4,145     | 1,743     | 2,355     | 3,441     |
| 51  | 2,249                                                     | 3,005     | 4,405     | 1,854     | 2,493     | 3,643     |
| 52  | 2,398                                                     | 3,208     | 4,703     | 1,969     | 2,640     | 3,858     |
| 53  | 2,562                                                     | 3,441     | 5,045     | 2,084     | 2,794     | 4,084     |
| 54  | 2,742                                                     | 3,701     | 5,427     | 2,199     | 2,952     | 4,317     |
| 55  | 2,940                                                     | 3,985     | 5,845     | 2,312     | 3,112     | 4,552     |

**Note:**

For presentation purposes, the insurance charges are rounded up to the next ringgit.

## Annual Insurance Charges for HLA MediShield III Rider

Occupational Class 1 & 2

| Age | Pre-retirement Deductible 0; Post-retirement Deductible 0 |           |           |           |           |           |
|-----|-----------------------------------------------------------|-----------|-----------|-----------|-----------|-----------|
|     | Male                                                      |           |           | Female    |           |           |
|     | MSIII 200                                                 | MSIII 300 | MSIII 500 | MSIII 200 | MSIII 300 | MSIII 500 |
| 56  | 3,156                                                     | 4,290     | 6,293     | 2,424     | 3,270     | 4,783     |
| 57  | 3,391                                                     | 4,612     | 6,766     | 2,533     | 3,422     | 5,006     |
| 58  | 3,645                                                     | 4,947     | 7,260     | 2,638     | 3,565     | 5,216     |
| 59  | 3,914                                                     | 5,293     | 7,769     | 2,741     | 3,701     | 5,416     |
| 60  | 4,196                                                     | 5,647     | 8,290     | 2,842     | 3,831     | 5,608     |
| 61  | 4,485                                                     | 6,007     | 8,819     | 2,942     | 3,957     | 5,794     |
| 62  | 4,779                                                     | 6,369     | 9,353     | 3,041     | 4,082     | 5,977     |
| 63  | 5,091                                                     | 6,785     | 9,964     | 3,240     | 4,349     | 6,367     |
| 64  | 5,401                                                     | 7,200     | 10,573    | 3,437     | 4,614     | 6,756     |
| 65  | 5,725                                                     | 7,631     | 11,207    | 3,643     | 4,890     | 7,161     |
| 66  | 6,062                                                     | 8,080     | 11,867    | 3,857     | 5,178     | 7,583     |
| 67  | 6,412                                                     | 8,548     | 12,554    | 4,079     | 5,477     | 8,021     |
| 68  | 6,753                                                     | 9,002     | 13,221    | 4,296     | 5,768     | 8,447     |
| 69  | 7,121                                                     | 9,493     | 13,942    | 4,530     | 6,082     | 8,908     |

Note:

For presentation purposes, the insurance charges are rounded up to the next ringgit.

# Annual Insurance Charges for HLA MediShield III Rider

## Occupational Class 1 & 2

| Age | Pre-retirement Deductible 0; Post-retirement Deductible 0 |           |           |           |           |           |
|-----|-----------------------------------------------------------|-----------|-----------|-----------|-----------|-----------|
|     | Male                                                      |           |           | Female    |           |           |
|     | MSIII 200                                                 | MSIII 300 | MSIII 500 | MSIII 200 | MSIII 300 | MSIII 500 |
| 70  | 7,502                                                     | 10,002    | 14,690    | 4,772     | 6,408     | 9,385     |
| 71  | 7,898                                                     | 10,529    | 15,465    | 5,023     | 6,746     | 9,880     |
| 72  | 8,308                                                     | 11,076    | 16,269    | 5,284     | 7,096     | 10,394    |
| 73  | 8,866                                                     | 11,821    | 17,363    | 5,639     | 7,572     | 11,092    |
| 74  | 9,444                                                     | 12,592    | 18,496    | 6,049     | 8,124     | 11,901    |
| 75  | 10,044                                                    | 13,392    | 19,670    | 6,480     | 8,702     | 12,748    |
| 76  | 10,665                                                    | 14,221    | 20,889    | 6,911     | 9,281     | 13,596    |
| 77  | 11,311                                                    | 15,081    | 22,153    | 7,350     | 9,871     | 14,461    |
| 78  | 11,788                                                    | 15,718    | 23,088    | 7,808     | 10,487    | 15,363    |
| 79  | 12,272                                                    | 16,363    | 24,037    | 8,276     | 11,116    | 16,285    |
| 80  | 12,762                                                    | 17,018    | 24,998    | 8,786     | 11,801    | 17,290    |
| 81  | 13,258                                                    | 17,678    | 25,969    | 9,319     | 12,517    | 18,338    |
| 82  | 13,765                                                    | 18,355    | 26,963    | 9,860     | 13,244    | 19,404    |
| 83  | 14,305                                                    | 19,076    | 28,022    | 10,403    | 13,973    | 20,471    |

**Note:**

For presentation purposes, the insurance charges are rounded up to the next ringgit.

# Annual Insurance Charges for HLA MediShield III Rider

## Occupational Class 1 & 2

| Age | Pre-retirement Deductible 0; Post-retirement Deductible 0 |           |           |           |           |           |
|-----|-----------------------------------------------------------|-----------|-----------|-----------|-----------|-----------|
|     | Male                                                      |           |           | Female    |           |           |
|     | MSIII 200                                                 | MSIII 300 | MSIII 500 | MSIII 200 | MSIII 300 | MSIII 500 |
| 84  | 14,882                                                    | 19,845    | 29,152    | 10,958    | 14,718    | 21,564    |
| 85  | 15,476                                                    | 20,637    | 30,315    | 11,526    | 15,482    | 22,683    |
| 86  | 16,087                                                    | 21,452    | 31,514    | 12,112    | 16,269    | 23,837    |
| 87  | 16,717                                                    | 22,293    | 32,748    | 12,716    | 17,081    | 25,026    |
| 88  | 17,237                                                    | 22,985    | 33,766    | 13,410    | 18,014    | 26,393    |
| 89  | 17,766                                                    | 23,692    | 34,804    | 14,132    | 18,983    | 27,814    |
| 90  | 18,306                                                    | 24,411    | 35,861    | 14,866    | 19,970    | 29,259    |
| 91  | 18,862                                                    | 25,153    | 36,951    | 15,600    | 20,956    | 30,704    |
| 92  | 19,435                                                    | 25,917    | 38,073    | 16,343    | 21,954    | 32,168    |
| 93  | 20,025                                                    | 26,704    | 39,230    | 17,093    | 22,961    | 33,643    |
| 94  | 20,633                                                    | 27,515    | 40,422    | 17,844    | 23,971    | 35,123    |
| 95  | 21,260                                                    | 28,351    | 41,650    | 18,593    | 24,978    | 36,598    |
| 96  | 21,906                                                    | 29,212    | 42,915    | 19,337    | 25,976    | 38,062    |
| 97  | 22,571                                                    | 30,100    | 44,219    | 20,090    | 26,989    | 39,546    |

Note:  
For presentation purposes, the insurance charges are rounded up to the next ringgit.

## Annual Insurance Charges for HLA MediShield III Rider

Occupational Class 1 & 2

| Age | Pre-retirement Deductible 0; Post-retirement Deductible 0 |           |           |           |           |           |
|-----|-----------------------------------------------------------|-----------|-----------|-----------|-----------|-----------|
|     | Male                                                      |           |           | Female    |           |           |
|     | MSIII 200                                                 | MSIII 300 | MSIII 500 | MSIII 200 | MSIII 300 | MSIII 500 |
| 98  | 23,257                                                    | 31,014    | 45,563    | 20,853    | 28,013    | 41,047    |
| 99  | 23,963                                                    | 31,956    | 46,947    | 21,600    | 29,017    | 42,518    |
| 100 | 24,691                                                    | 32,927    | 48,373    | 22,256    | 29,898    | 43,810    |

Note:

For presentation purposes, the insurance charges are rounded up to the next ringgit.

## Important Notes

1. This brochure is intended to assist you to understand the basic and important features of a Medical and Health Insurance (MHI) product so that you are able to make an informed decision before purchasing the product. Please refer to the sample policy contract for details of the important health insurance features of the plan that you intend to purchase.
2. You should ensure that important information regarding the plan is disclosed to you and that you understood the information disclosed. Where there is ambiguity, please seek an explanation/clarification from the company or its intermediary. To find out more about the basics of health insurance, please refer to the consumer education booklet on medical and health insurance available at most branches of insurance and takaful companies. You may also log on to [www.insuranceinfo.com.my](http://www.insuranceinfo.com.my) for more information.
3. Prior to making a decision to purchase any Medical and Health Insurance (MHI) policy, you should be satisfied that this plan will best serve your needs and resources and the amount payable under the policy is an amount you can afford.

## IMPORTANT:

This brochure is for general information only and is not intended to be construed as a contract of insurance. Please refer to the Product Disclosure Sheet and Sales Illustration before purchasing the policy and to the policy contract for specific terms, conditions, and exclusions of coverage. Do note that the information contained in the leaflet may change without prior notice.

Hong Leong Assurance Berhad is licensed under the Financial Services Act 2013 and regulated by Bank Negara Malaysia.

For further information, call your friendly HLA agent today: